

# KAHALU'U BAY AQUATIC ECOSYSTEM RESTORATION STUDY

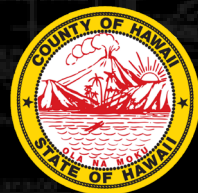
PUBLIC INFORMATION MEETING  
West Hawai'i Civic Center  
December 12, 2024  
5:00-6:30pm



U.S. ARMY



US Army Corps  
of Engineers®





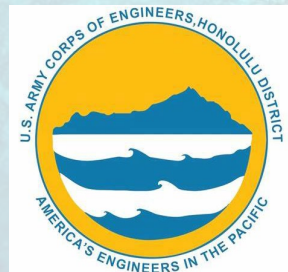
# OPENING REMARKS

## Study Partners:

**County of Hawai'i, Department of Parks and Recreation**  
Clayton Honma, Director

**U.S. Army Corps of Engineers, Honolulu District**  
Michael Salyer, Chief, Civil and Public Works Branch

**The Kohala Center**  
Cindi Punihaole, Director, 'Āina Advocacy





# MEETING AGENDA/PURPOSE



## Agenda:

- Study Background and Timeline
- Existing Conditions
- Q&A Session

Meeting Purpose: To introduce the study and engage the public and neighboring communities by gathering information, concerns and ideas for the study team to incorporate and consider.

**Section 206** authorizes the U.S. Army Corps of Engineers (USACE) to initiate investigations and implement projects for **aquatic ecosystem restoration** with the objective of **restoring degraded ecosystem** structure, function and dynamic processes **to a less degraded, more natural condition** considering the ecosystem's natural integrity, productivity, stability, and biological diversity.

*This study is cost-shared with the County of Hawai'i*



# CONTINUING AUTHORITIES PROGRAM PHASES



- 1 Letter of interest (LOI) from non-federal sponsor
  - 4/7/22 COH submits letter requesting for USACE study
  - 8/21/23 COH submits updated letter
- 2 Federal Interest Determination (FID)
  - April 2023 - Feb 2024 Development of FID report
  - 2/12/24 USACE approves FID
- 3 Feasibility Cost Share Agreement (FCSA)
  - 8/14/24 USACE and COH execute FCSA

- 4 Final Feasibility Report with NEPA document
- 5 Project Partnership Agreement (PPA)
- 6 Design
- 7 Construction
- 8 Operations & Maintenance (O&M)



# FEASIBILITY PHASE STUDY PROCESS & TIMELINE



**SMART**  
Planning Process



**Public Input**  
Opportunities

Study initiation  
(August 14, 2024)

**WE ARE HERE**

Scoping Meeting  
Introduce study and initial input from public  
Dec 12, 2024

Draft Report release

30-Day Public Comment Period

Public Meeting  
Discuss TSP presented in Draft Report  
(during comment period)

Public Meeting  
(Tentative)

Final Report release

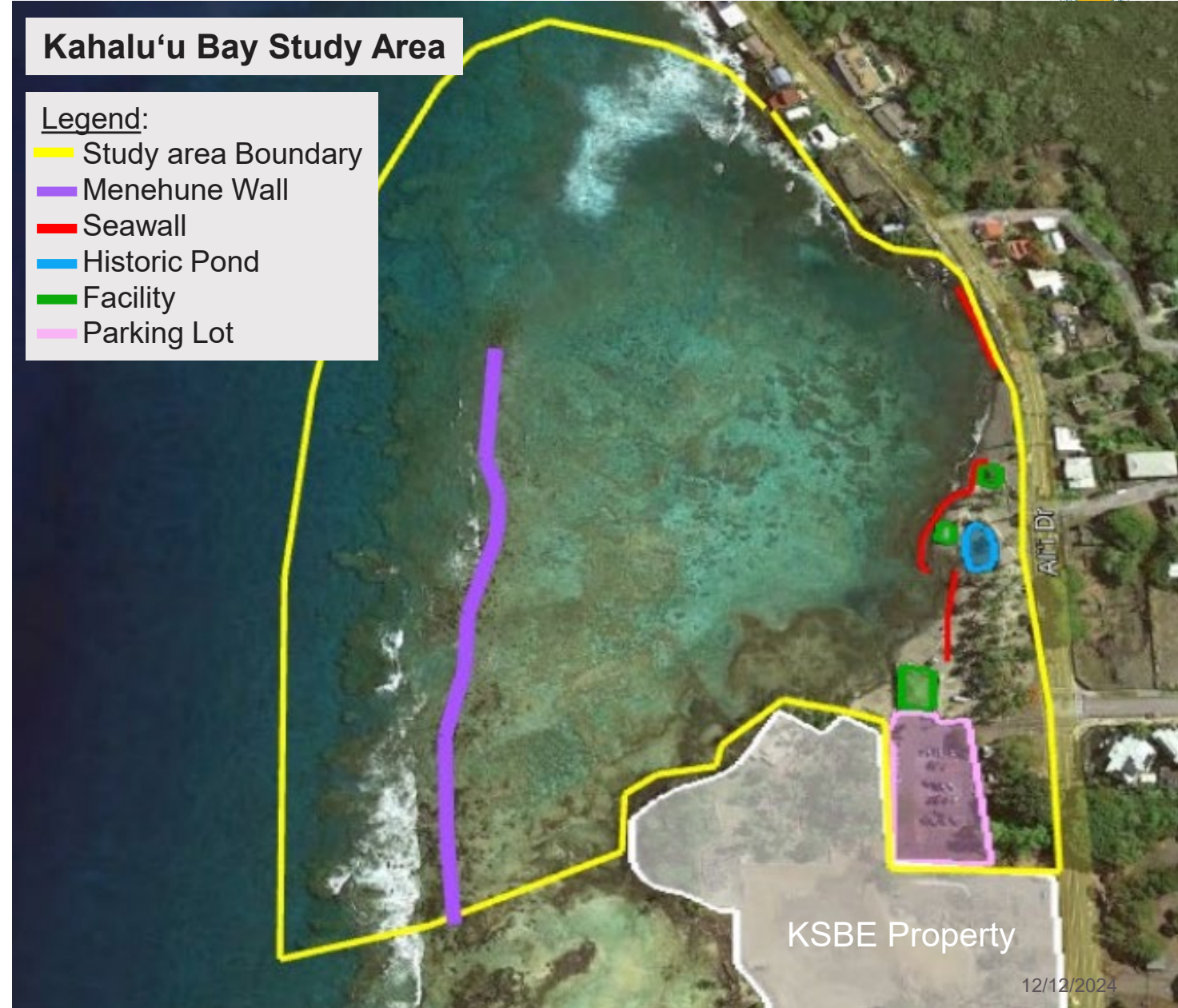


# SCOPING: STUDY AREA FEATURES

## Existing Conditions:

- Existing Uses
- Features:
  - Seawalls
  - 3 Facilities
  - Bathrooms
  - Menehune Wall

King Tides + Sea Level Rise =  
Continued Damage  
More Erosion/Sedimentation  
Poor Reef Health



# SCOPING: STUDY AREA DYNAMICS (CONT.)

- Key takeaways:
  - Menehune wall deterioration since Hurricanes 'Iwa (1982) & 'Iniki (1992)
  - Annual winter swell waves regularly impact bay and shoreline structures
  - Parking lot regularly floods and used to be a wetland



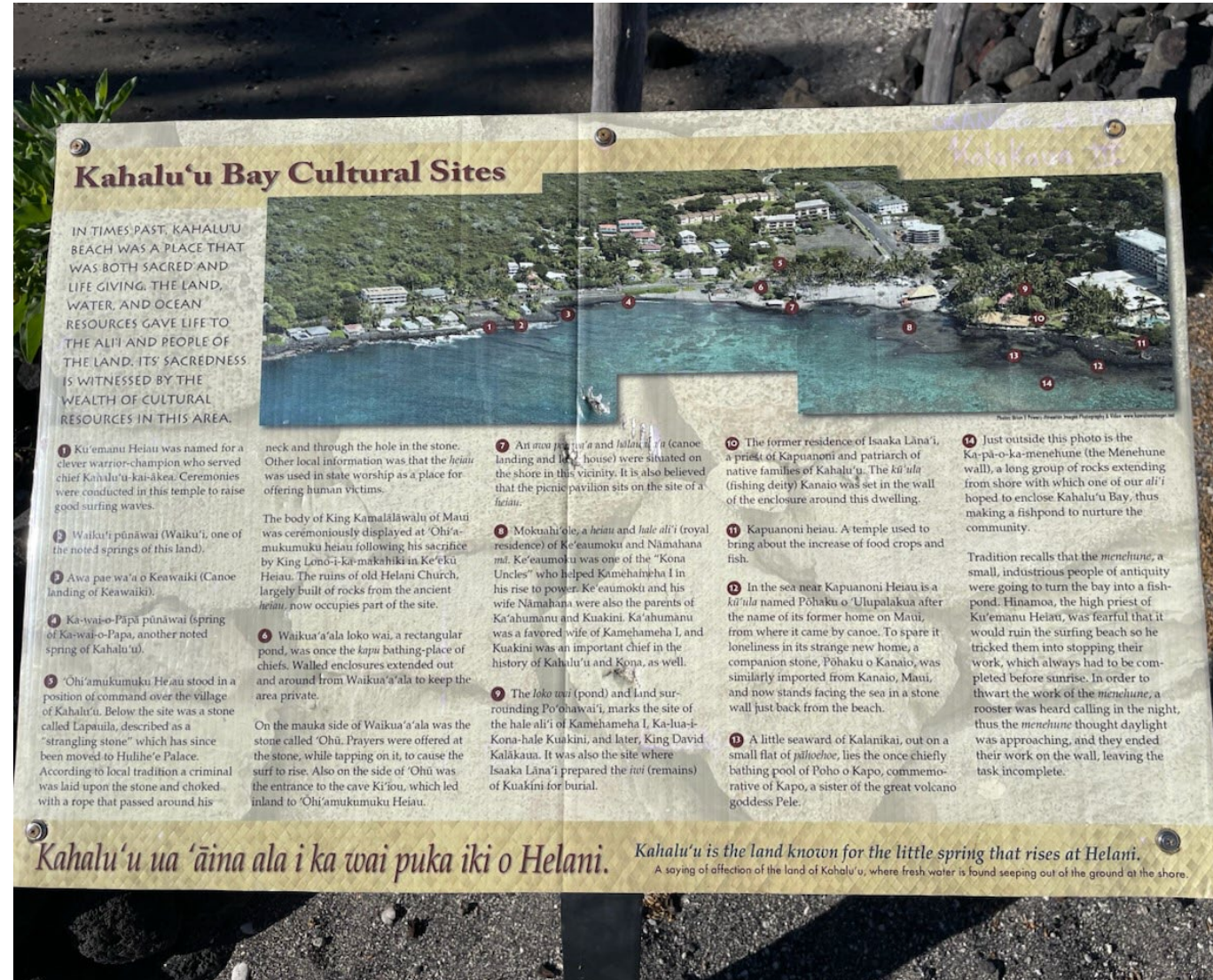




# SCOPING: CULTURAL

## Existing Conditions:

- Kahalu‘u Bay and its uplands are on the National Register of Historic Places
- The area contains an extremely dense concentration of archaeological sites and features both above and below the water's surface
- Historic features:
  - “Menehune Wall”
  - Waiakua‘a‘ala loki wai pond
  - several Heiau
  - stone mounds, platforms and rock alignments
- The area is also historically important for subsistence and recreation



Kahalu‘u Bay signage (Photo credit: USACE, 2024)

## SCOPING: CULTURAL (CONT.)

- Key takeaways:
  - Community input and cultural considerations are integral to study success
  - The area contains significant cultural sites for which privacy is a consideration



Kahalu'u Bay in 1950 (Source: Keeper of the Bay)



# SCOPING: ENVIRONMENTAL



- Existing Conditions
- Factors affecting the health of Kahalu‘u Bay:
  - Land-based Pollution
  - Physical Damage
  - Erosion/Sedimentation
  - Climate Change!!





# SCOPING: ENVIRONMENTAL (CONT.)

- Key takeaways:
  - Remove stressors to increase resistance and resilience!
  - Circulation is very important for coral health
  - Optimal conditions needed for coral restoration success



# QUESTIONS FOR ATTENDEES:



How do you currently use Kahalu'u Bay?

What do you really like about Kahalu'u Bay?

What are some things you wish were different about Kahalu'u Bay and the beach park?

Any opportunities/concerns related to the natural environment? e.g., coral, fish, plants, air/water quality, etc.

Any opportunities/concerns related to the human environment? e.g., traffic, noise, economy, recreation, etc.

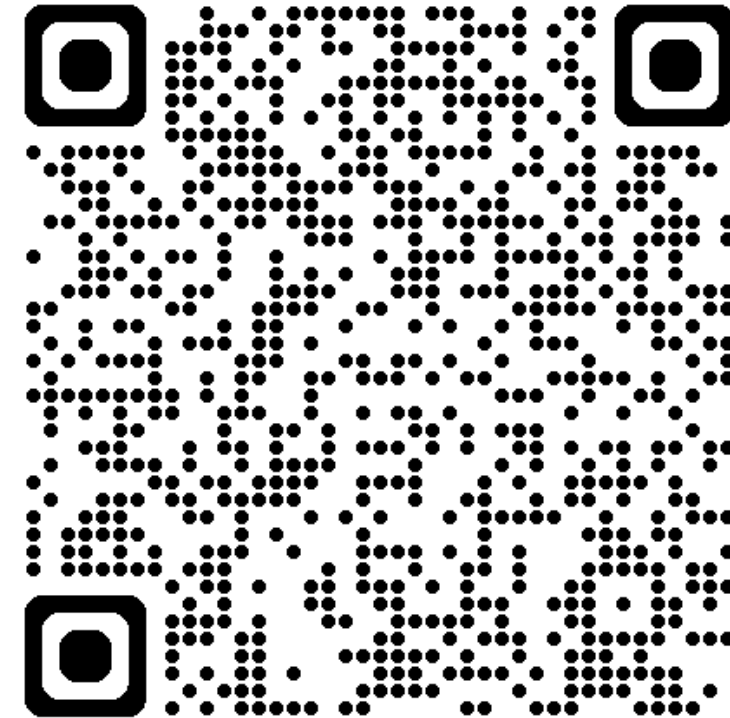
Any opportunities/concerns related to the cultural environment? e.g., traditional/cultural practices, uses, resources, access, etc

Do you have any creative ideas for aquatic ecosystem restoration?



[www.poh.usace.army.mil/Missions/Civil-Works/Civil-Works-Projects/Kahaluu-Bay/](http://www.poh.usace.army.mil/Missions/Civil-Works/Civil-Works-Projects/Kahaluu-Bay/)

The screenshot shows a web browser displaying the US Army Corps of Engineers Honolulu District Website. The page title is "Kahaluu Bay Ecosystem Restoration Project". Under the "Announcement" section, it states that a public scoping and informational meeting will be held on Thursday, December 12, 2024, from 5-6:30 p.m. A link to download the flyer is provided. Below this, there are three columns: "Public Meeting Scheduled" with details for Thursday, Dec. 12, 5-6:30 p.m. HST, including in-person and virtual meeting information; "Project Status and Background" describing the study under Section 206 of the Water Resources Development Act of 1996; and "Hawaii Projects" with a list of islands: Maui, Molokai, Oahu, Hawaii (Big Island), Kauai, and Lanai. There is also a "Territories & Others" section.



Want to stay up to date? Email [CEPOH-Planning@usace.army.mil](mailto:CEPOH-Planning@usace.army.mil) to *sign up* for our email notification list!



# STUDY CONTACT INFO



## USACE, Honolulu District:

Cindy Acpal, *Project Manager*

Michael Salyer, *Chief, Civil and Public Works Branch (PPC)*

Phone (PPC Main): (808) 835-4175

E-mail: [CEPOH-Planning@usace.army.mil](mailto:CEPOH-Planning@usace.army.mil) (subject: Kahalu'u Bay Study)

Website: [www.poh.usace.army.mil/Missions/Civil-Works/Civil-Works-Projects/Kahaluu-Bay/](http://www.poh.usace.army.mil/Missions/Civil-Works/Civil-Works-Projects/Kahaluu-Bay/)

## Hawai'i County Dept of Parks and Recreation:

Clayton Honma, *Director*

Melissa Samura, *Deputy Director*

Phone: (808) 961-8411

E-mail: [parks\\_recreation@hawaiicounty.gov](mailto:parks_recreation@hawaiicounty.gov)

Website: [www.parks.hawaiicounty.gov/home-parks](http://www.parks.hawaiicounty.gov/home-parks)

## The Kohala Center

Cindi Punahaole, *Director, Kahalu'u Bay Education Center*

Phone: (808) 887-6411

E-mail: [cpunahaole@kohalacenter.org](mailto:cpunahaole@kohalacenter.org)

Website: [www.kohalacenter.org/kbec](http://www.kohalacenter.org/kbec)

