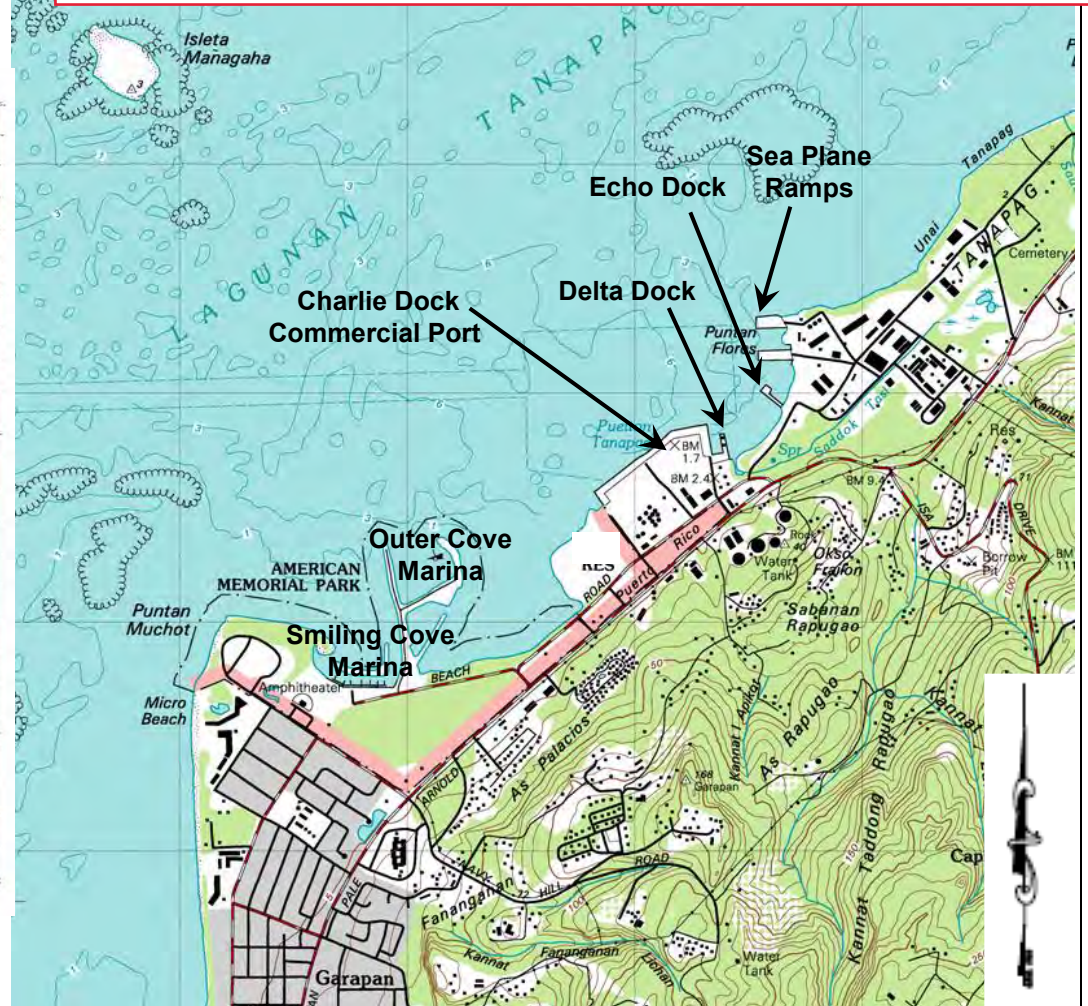


SAIPAN



Vicinity Map of Saipan Commercial Port and Delta Dock

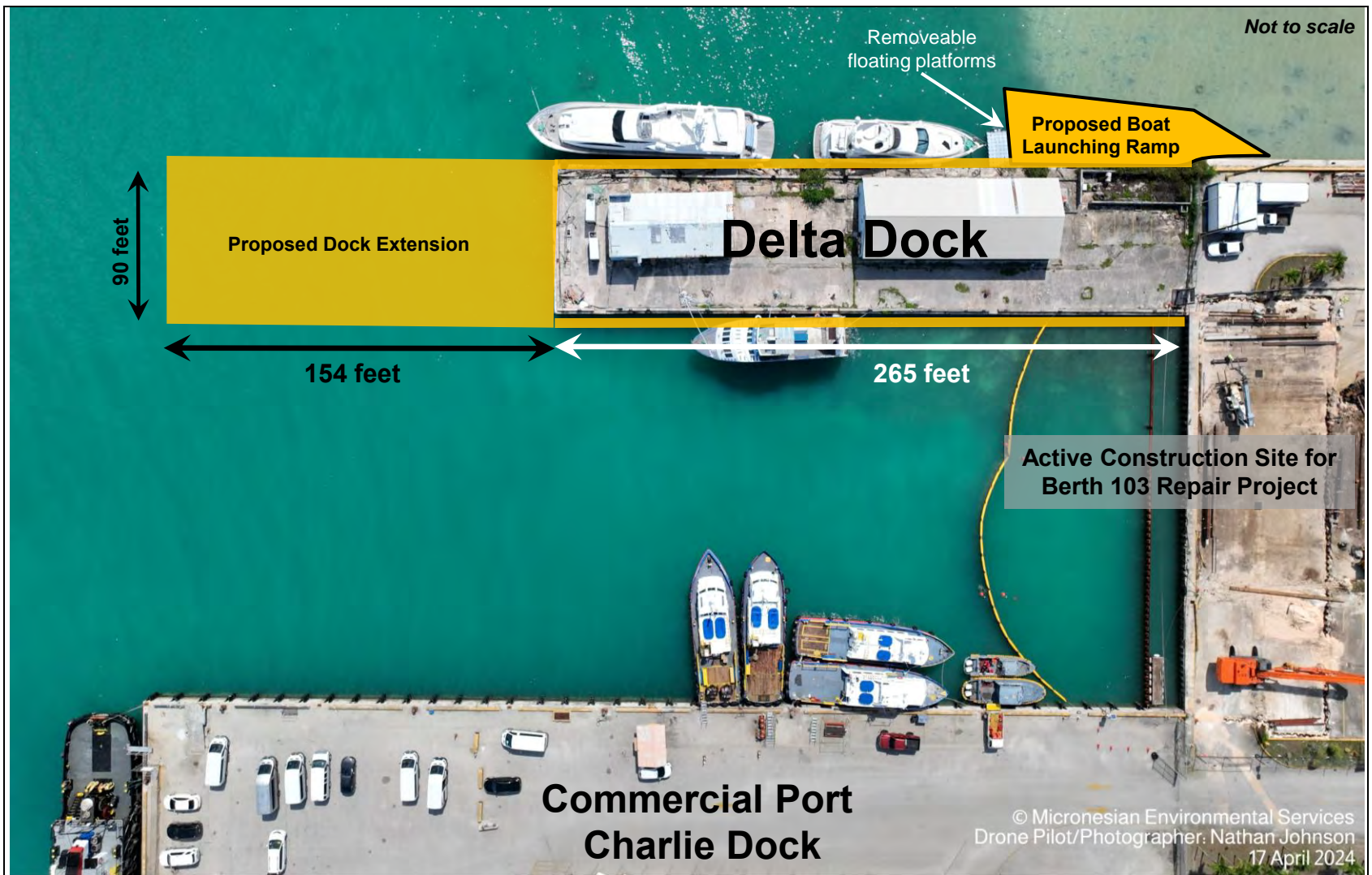
modified from 1999 USGS topographical map of Saipan



Delta Dock Site Bathymetry Map

prepared by GHD, Inc

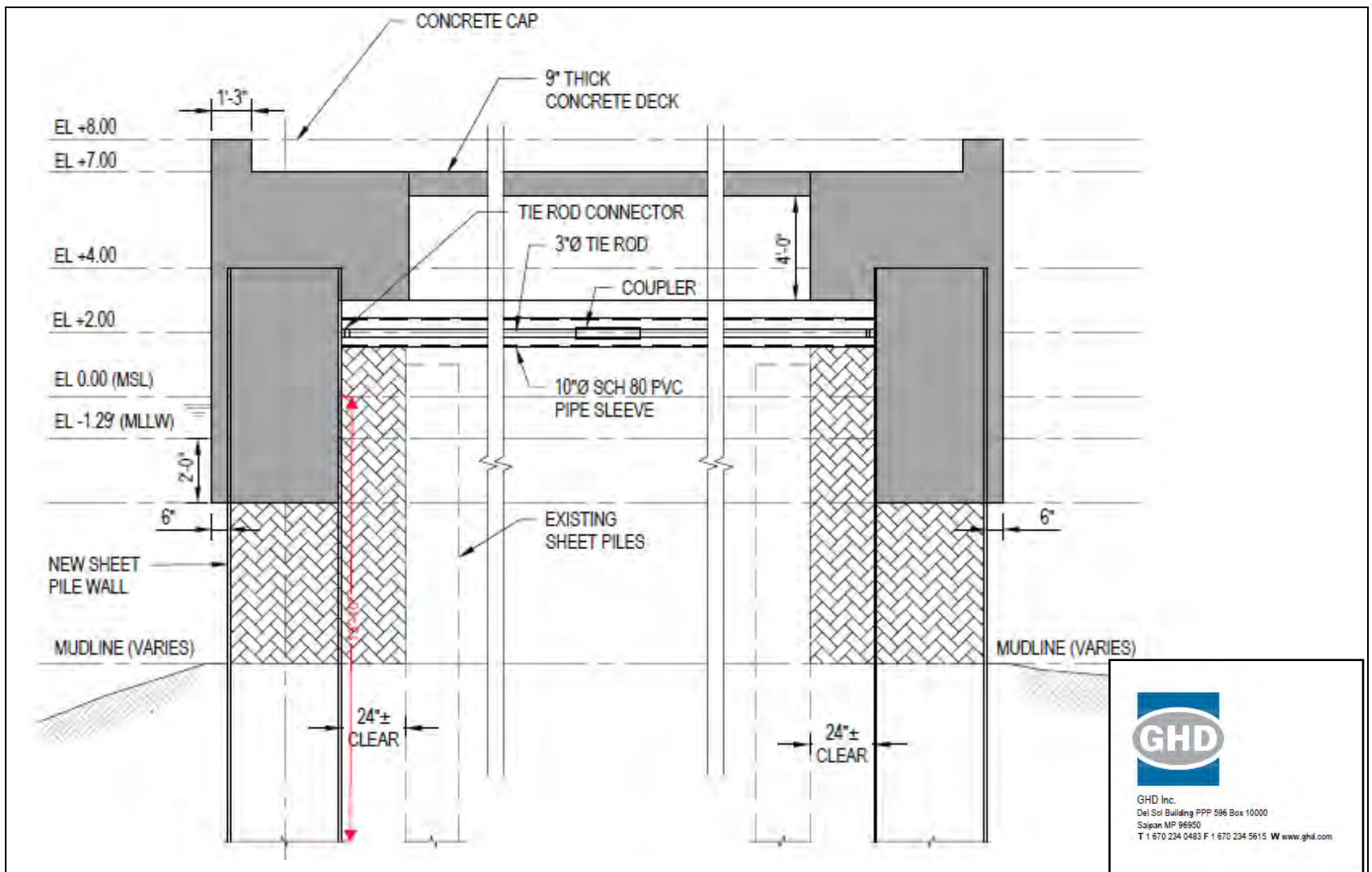
Micronesia**E**nvironmental**S**ervices



Layout for Dock Extension, Encapsulation, and Vessel Launching Ramp

Micronesia **E**nvironmental **S**ervices

POH-2024-00027 Delta Dock Rehabilitation and Extension and Boat Ramp
Lat: 15.22692°, Long: 145.73716°
Sheet 3 of 8 March 10, 2025



Typical Section At Existing Dock

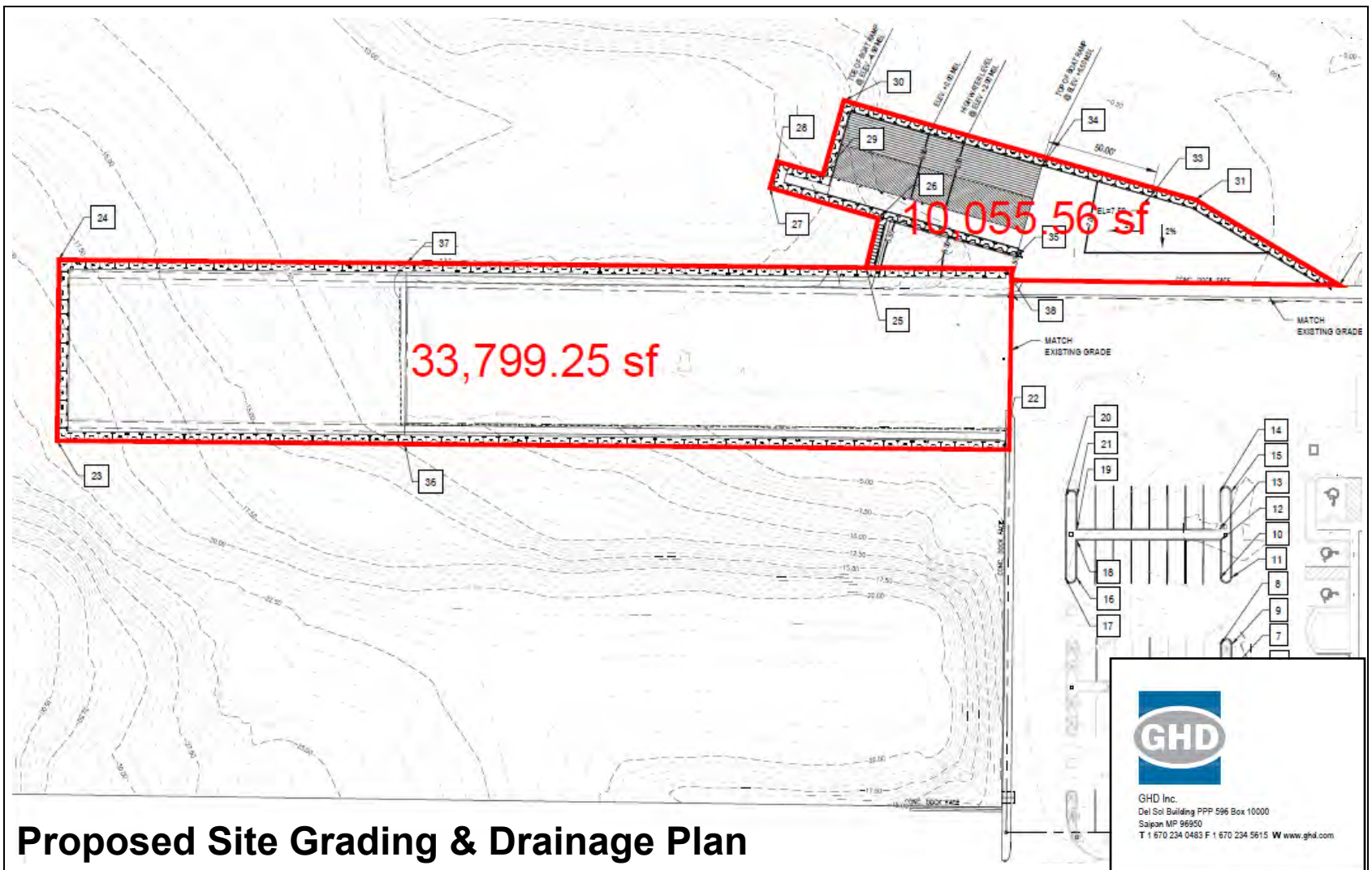
Micronesia **E**nvironmental **S**ervices

POH-2024-00027 Delta Dock Rehabilitation and Extension
 and Boat Ramp

Lat:15.22692°, Long: 145.73716°

Sheet 5 of 8

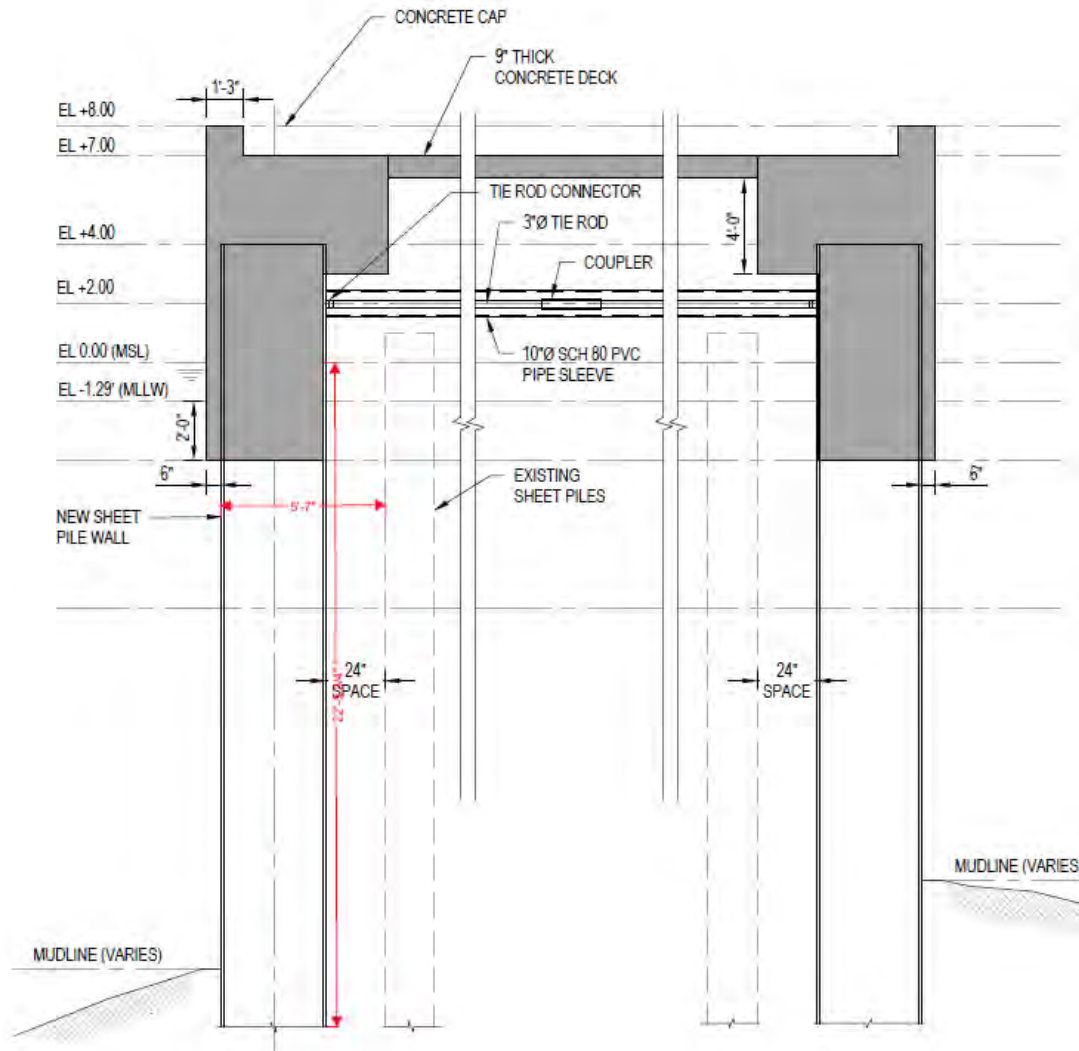
March 10, 2025



Proposed Site Grading & Drainage Plan

Micronesia**E**nvironmental**S**ervices

POH-2024-00027 Delta Dock Rehabilitation and Extension
and Boat Ramp
Lat:15.22692°, Long: 145.73716°
Sheet 6 of 8 March 10, 2025



GHD Inc.
 Del Sol Building PPP 596 Box 10000
 Saipan MP 96950
 T 1 670 234 0483 F 1 670 234 5615 W www.ghd.com

Typical Section At Dock Extension

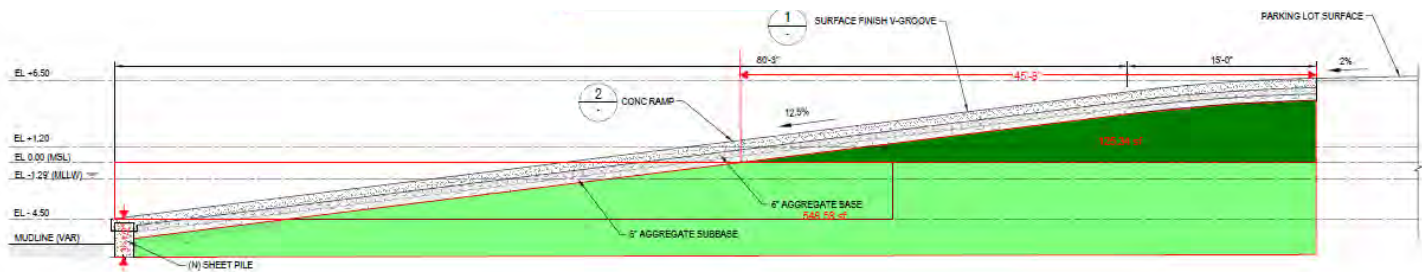
Micronesia **E**nvironmental **S**ervices

POH-2024-00027 Delta Dock Rehabilitation and Extension
 and Boat Ramp

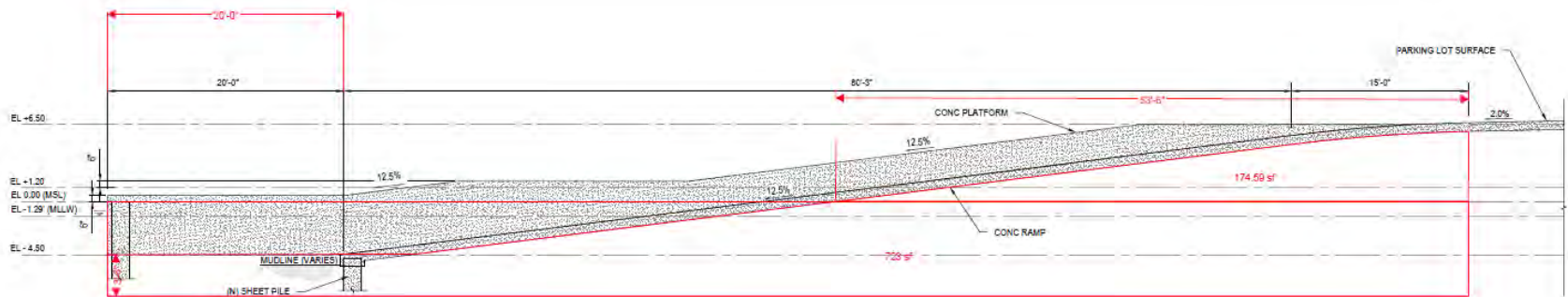
Lat: 15.22692°, Long: 145.73716°

Sheet 7 of 8

March 10, 2025



A SECTION - CONCRETE RAMP
S-104 SCALE: 1" = 5'



GHD Inc.
Del Sol Building PPP 596 Box 10000
Saipan MP 96950
T 1 670 234 0483 F 1 670 234 5615 W www.ghd.com

Typical Boat Launching Ramp

Micronesia **E**nvironmental **S**ervices

POH-2024-00027 Delta Dock Rehabilitation and Extension
and Boat Ramp

Lat: 15.22692°, Long: 145.73716°

Sheet 8 of 8

March 10, 2025