

PROPOSED PLAN PUBLIC MEETING

Former Waikoloa Maneuver Area
Project 19 – Sector 15
Munitions Response Site

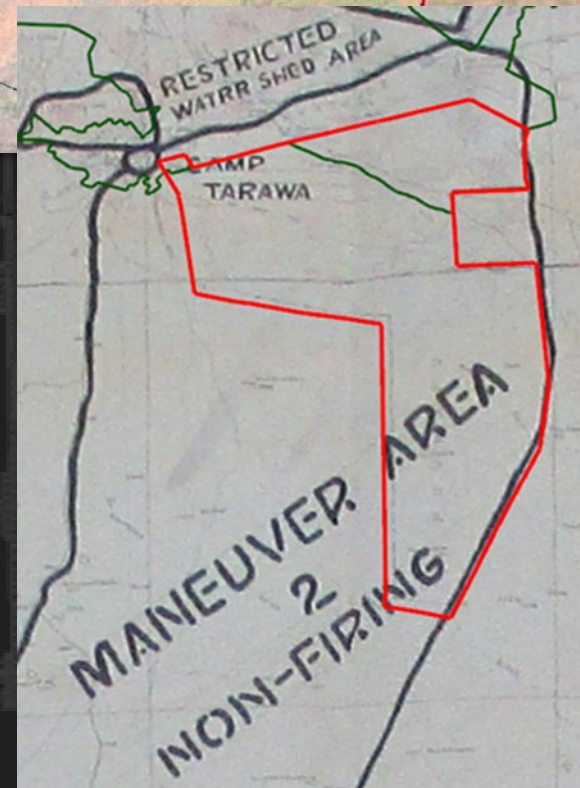
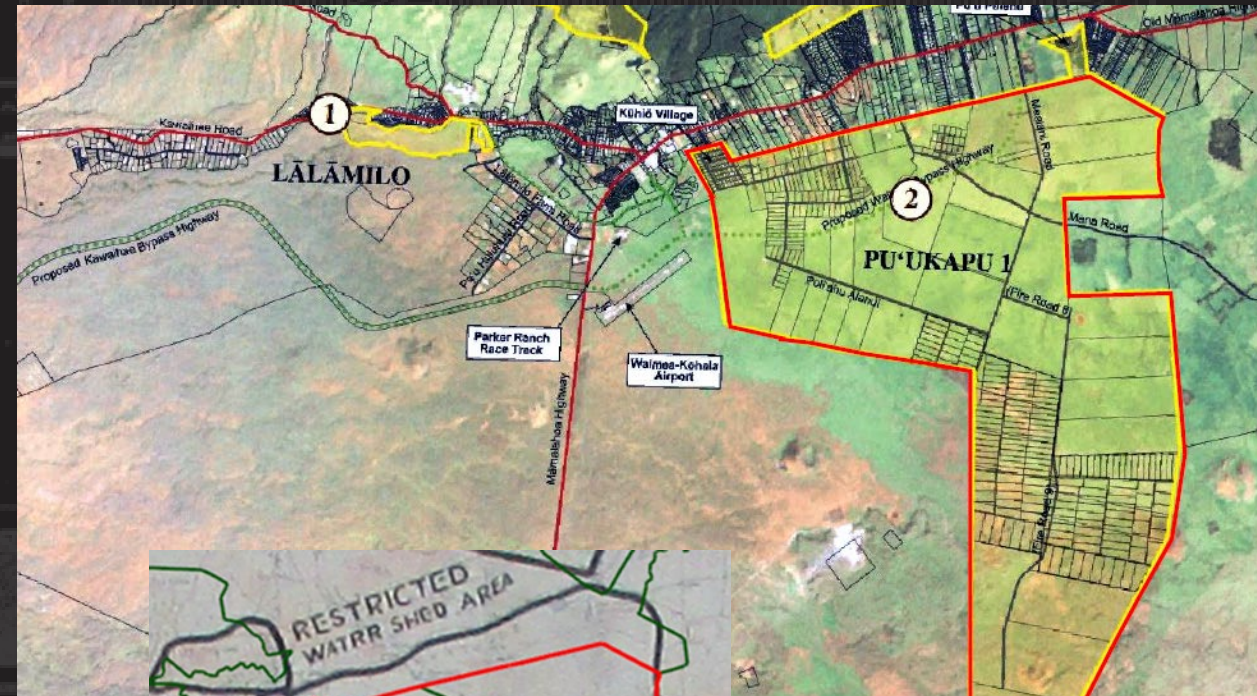
AUGUST 12, 2023



U.S. ARMY



US Army Corps
of Engineers®





U.S. ARMY

AGENDA

2



- Introductions
- CERCLA Process
- Sector 15 (Background, History, Use)
- Previous Investigations
- Remedial Investigation Results
- Summary of Site Risks
- Next Steps
- Public Comment Opportunity



INTRODUCTIONS



U.S. ARMY



US Army Corps
of Engineers®



U.S. ARMY

INTRODUCTIONS

4



Project Team:

- US Army Corps of Engineering (USACE) Honolulu District
- USACE Huntsville
- USACE Pacific Ocean Division
- USACE Contractor: EA Engineering, Science, and Technology, Inc. PBC

Stakeholders:

- Hawai'i Department of Health
- Community members
- Department of Hawaiian Home Lands
- Private landowners
- Restoration Advisory Board





U.S. ARMY

PURPOSE

5



Why are we here?

- Present Sector 15 background.
- Present the results of the military munitions investigations at Sector 15.
- Present the Proposed Plan for Sector 15.
- Receive public input on the Proposed Decision.



CERCLA PROCESS



U.S. ARMY



US Army Corps
of Engineers®



CERCLA PROCESS

Comprehensive Environmental Response, Compensation and Liability Act

Formerly Used Defense Sites (FUDS) program work is executed in accordance with the Comprehensive Environmental Response, Compensation and Liability Act (CERCLA) and the National Oil and Hazardous Substances Pollution Contingency Plan (NCP).

CLEANUP PROCESS

CERCLA work includes:

- ✓ Identifying eligible properties.
- ✓ Investigating their condition and addressing any contamination that was the result of DOD activities.
- ✓ Remediation of military munitions that may remain on a site.

Under the CERCLA process, projects can take several years to complete, and each is unique.

Active communication, coordination and collaboration with property owners, state and federal regulators, tribal and local governments, local communities and other potentially responsible parties are critical in planning and carrying out cleanups.

USACE works closely with the current owner of the property and the public to choose the best alternative when it conducts the response action.

Preliminary Assessment/Site Inspection



- Identify projects posing potential risk.
- Eliminate projects that pose no unacceptable risk.
- Determine if a removal action is warranted.

Remedial Investigation



- Determine nature/extent of contamination.
- Assess risks to human health and the environment.
- Support development of remedial alternatives.

Feasibility Study



- Develop and evaluate remedial alternatives to support remedy selection.
- Evaluate alternatives against CERCLA criteria.

Proposed Plan/Record of Decision



- Provide documentation from RI/FS supporting preferred remedial alternative.
- Obtain stakeholder input and provide opportunity for public comment on the preferred alternative.
- Selection and approval of the final remedy for the site.

CURRENT STATUS

Remedial Design and Action



- Develop design plans, specifications of selected remedy.
- Implement selected remedy.

Long-Term Management



- Verify that the remedy continues to be protective of human health and the environment.

Safety is a priority. If you encounter suspected military munitions, please visit: <https://3Rs.mil>

www.fuds.mil



US Army Corps of Engineers

SECTOR 15 (BACKGROUND, HISTORY, USE)



US Army Corps
of Engineers®

U.S. ARMY



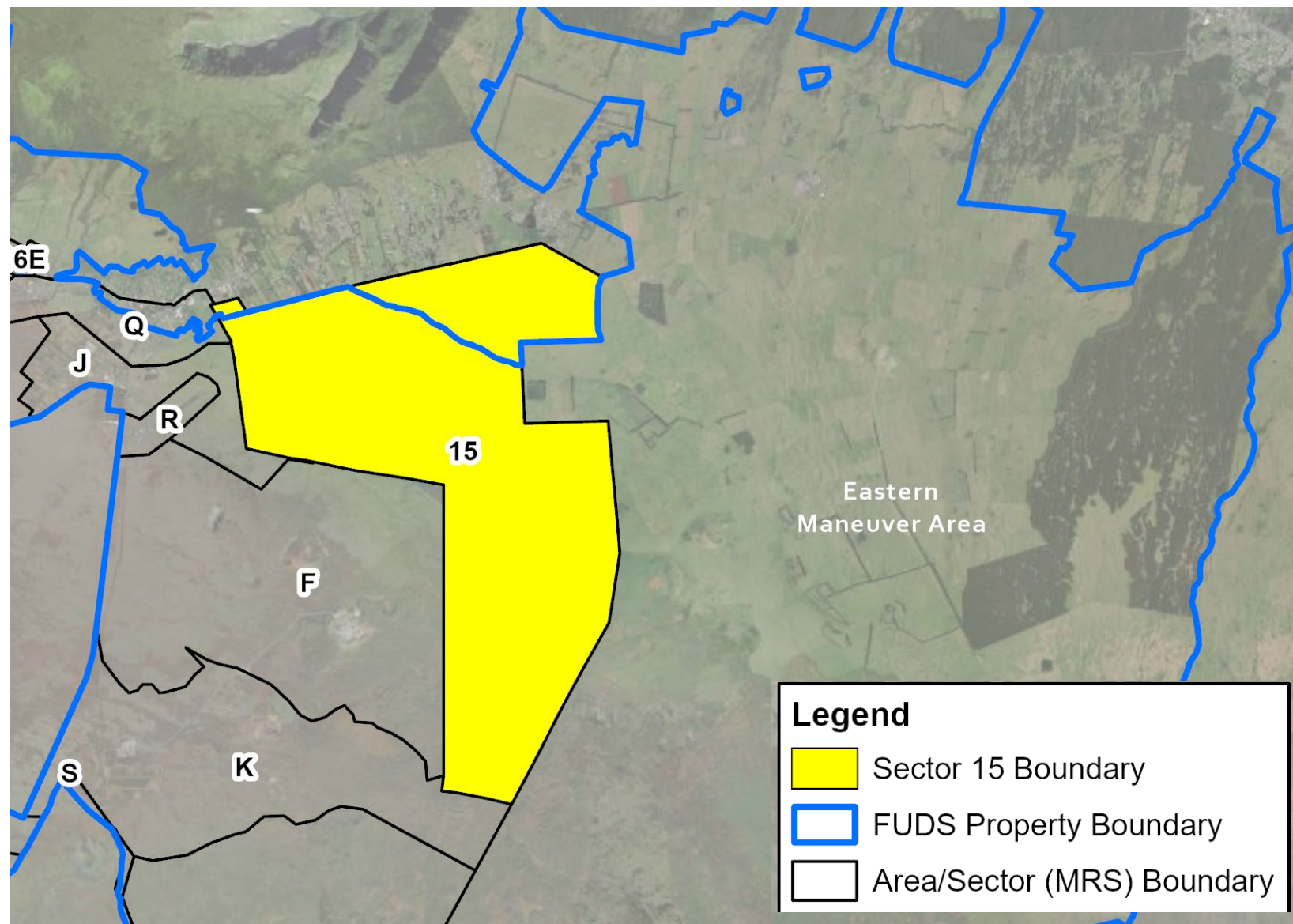
U.S. ARMY

SECTOR 15 LOCATION AND BACKGROUND



9

- ❖ 11,200-acre parcel of land located in the northeast portion of the former Waikoloa Maneuver Area (WMA).
- ❖ Comprised of the Department of Hawaiian Home Lands properties called Pu'ukapu 1 and is currently leased for residential, agricultural, and grazing purposes.
- ❖ Historically utilized for agricultural purposes.

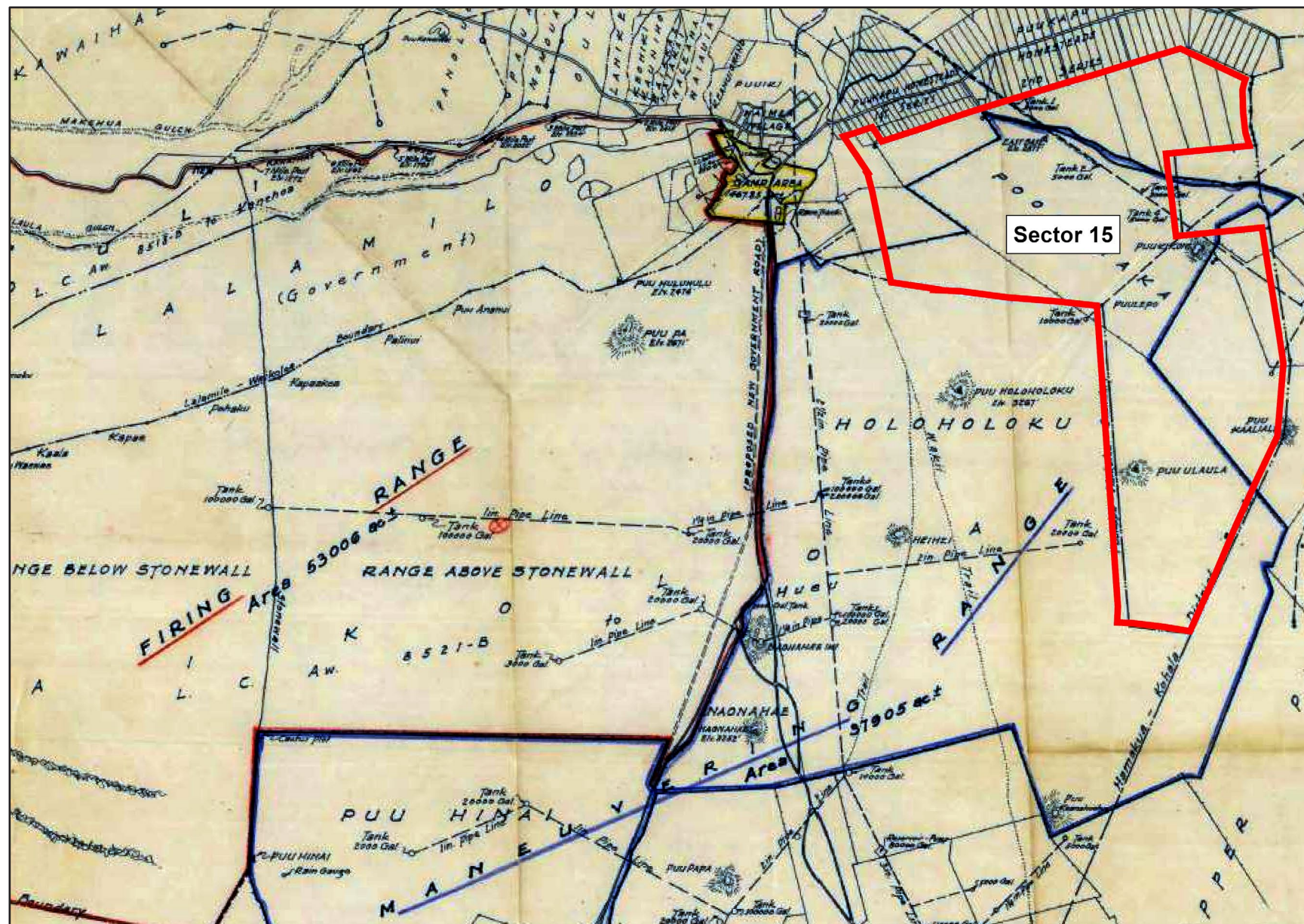


U.S. ARMY



SECTOR 15 SITE HISTORY

- ❖ Waikoloa Maneuver Area (WMA) was acquired by the Navy in 1943 for a training area for the 2nd and 5th Marine Divisions during World War II.
- ❖ The land was obtained for use as a World War II military training camp (Camp Tarawa), maneuver area, and live fire range.
- ❖ Portions of WMA were used as an artillery firing range, while other portions were used for troop maneuvers.
- ❖ Sector 15 is within the WMA on grazing land where live fire was not allowed.





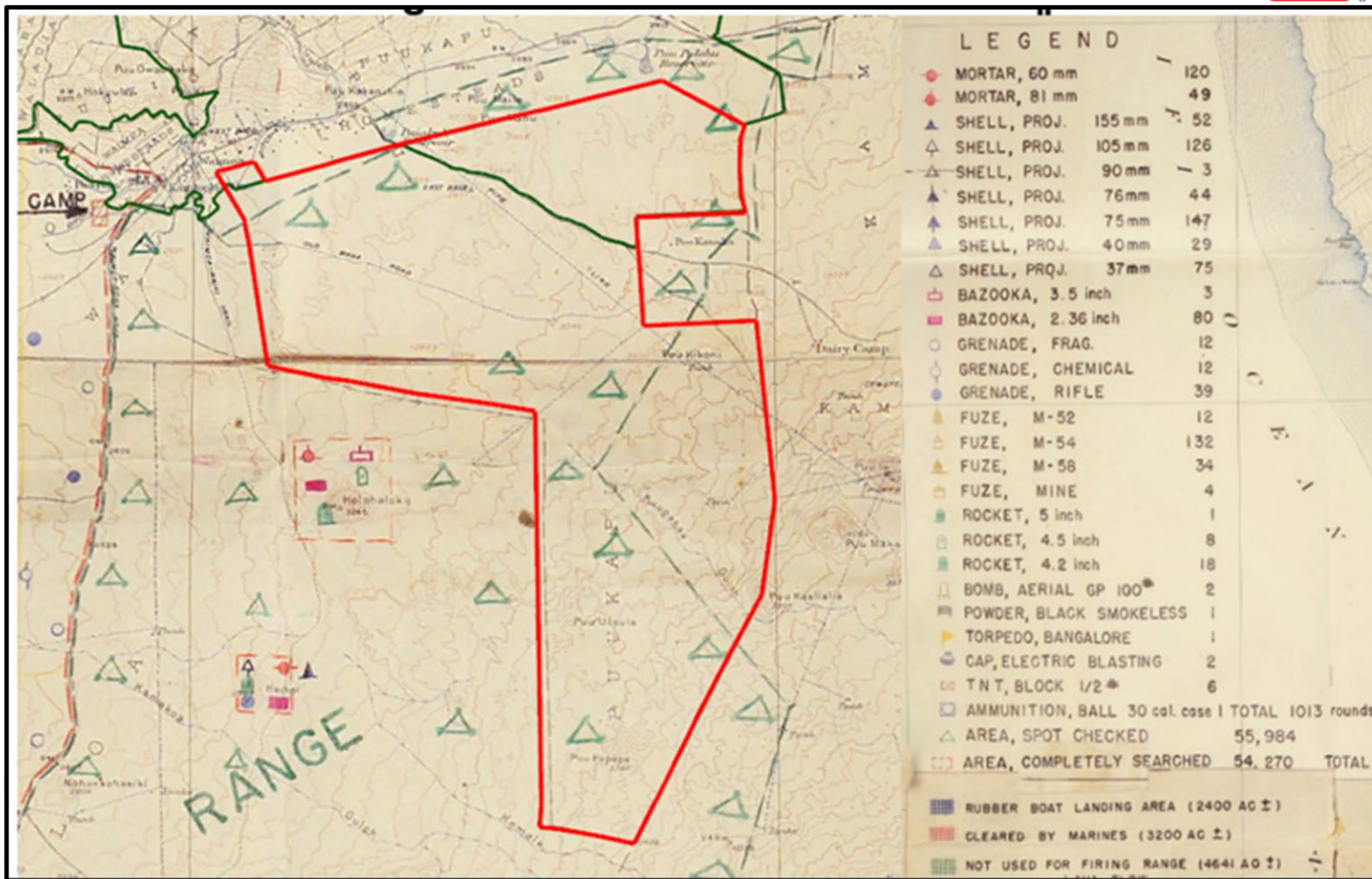
U.S. ARMY

SECTOR 15 SITE HISTORY

11



- ❖ In 1946 the license for the “Maneuver Area” portion of WMA (that included Sector 15) was cancelled and transferred back to Parker Ranch.
- ❖ In 1954 team of 50 men from Explosives Ordnance Disposal (EOD) units surveyed and removed numerous munitions items from 54,270 acres of the former firing and maneuver area.
- ❖ Sector 15 was spot checked, and no munitions or munitions debris was recovered.





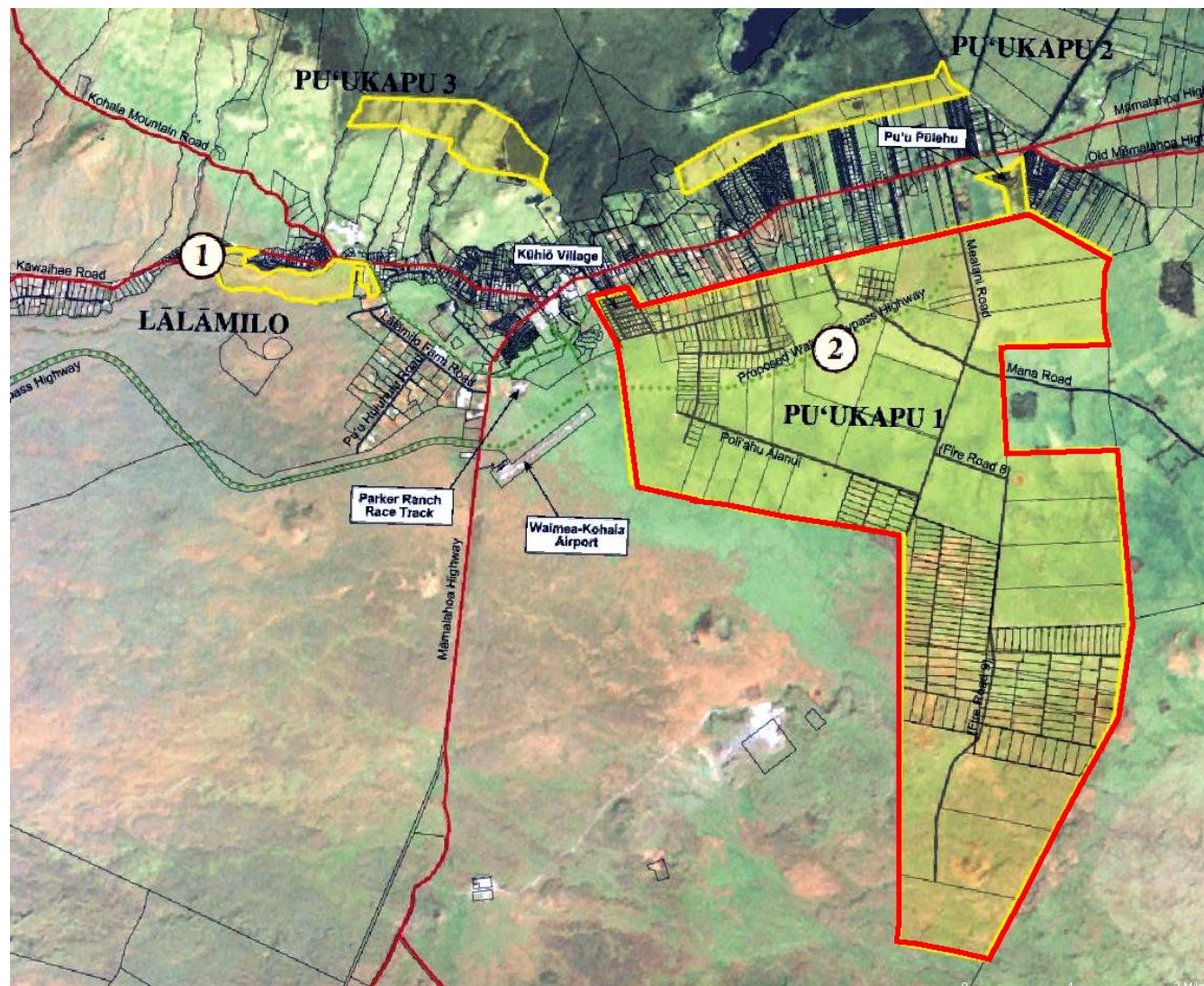
U.S. ARMY

SECTOR 15 SITE USE TODAY

12



- ❖ With the exception of the northern portion of Sector 15, Pu'ukapu 1 was historically used for agricultural purposes and grazing. It is currently leased to Hawaiian Homesteaders for similar purposes along with residential use.
- ❖ Farm lots are located in the area between Kūhiō Village, Kanu o ka Aina Charter School, and Pu'u Pūlehu.
- ❖ Kūhiō Village (residential lots) is located at the fringe of Waimea Village, while Pu'u Pūlehu (residential lots) is closer to the eastern boundary.
- ❖ Future use is anticipated to be similar.



(<https://dhhl.hawaii.gov/wp-content/uploads/2011/06/Lalamilo-021708-final-aproval.pdf>)

PREVIOUS INVESTIGATIONS



US Army Corps
of Engineers®

U.S. ARMY



U.S. ARMY

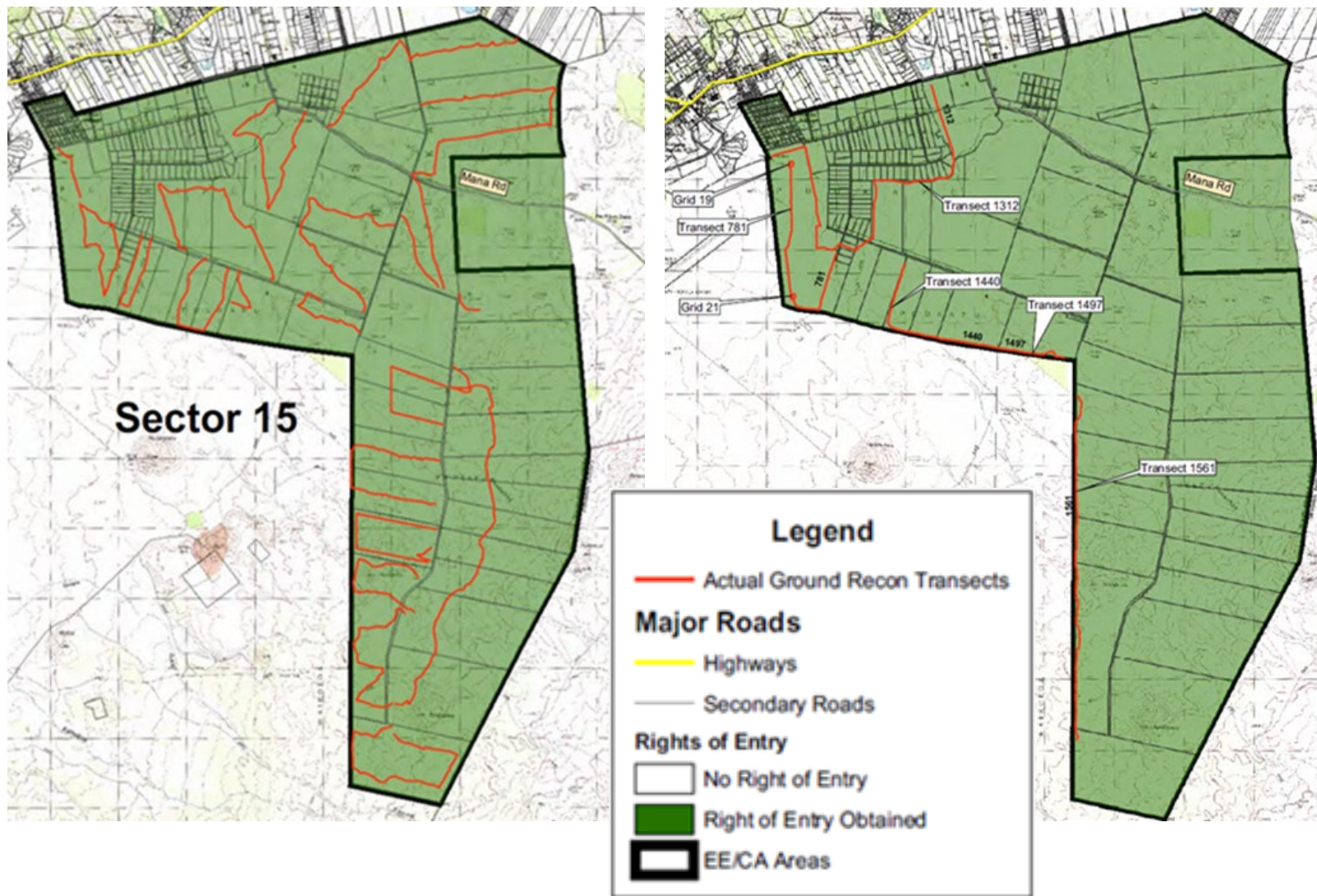
PREVIOUS INVESTIGATIONS

14



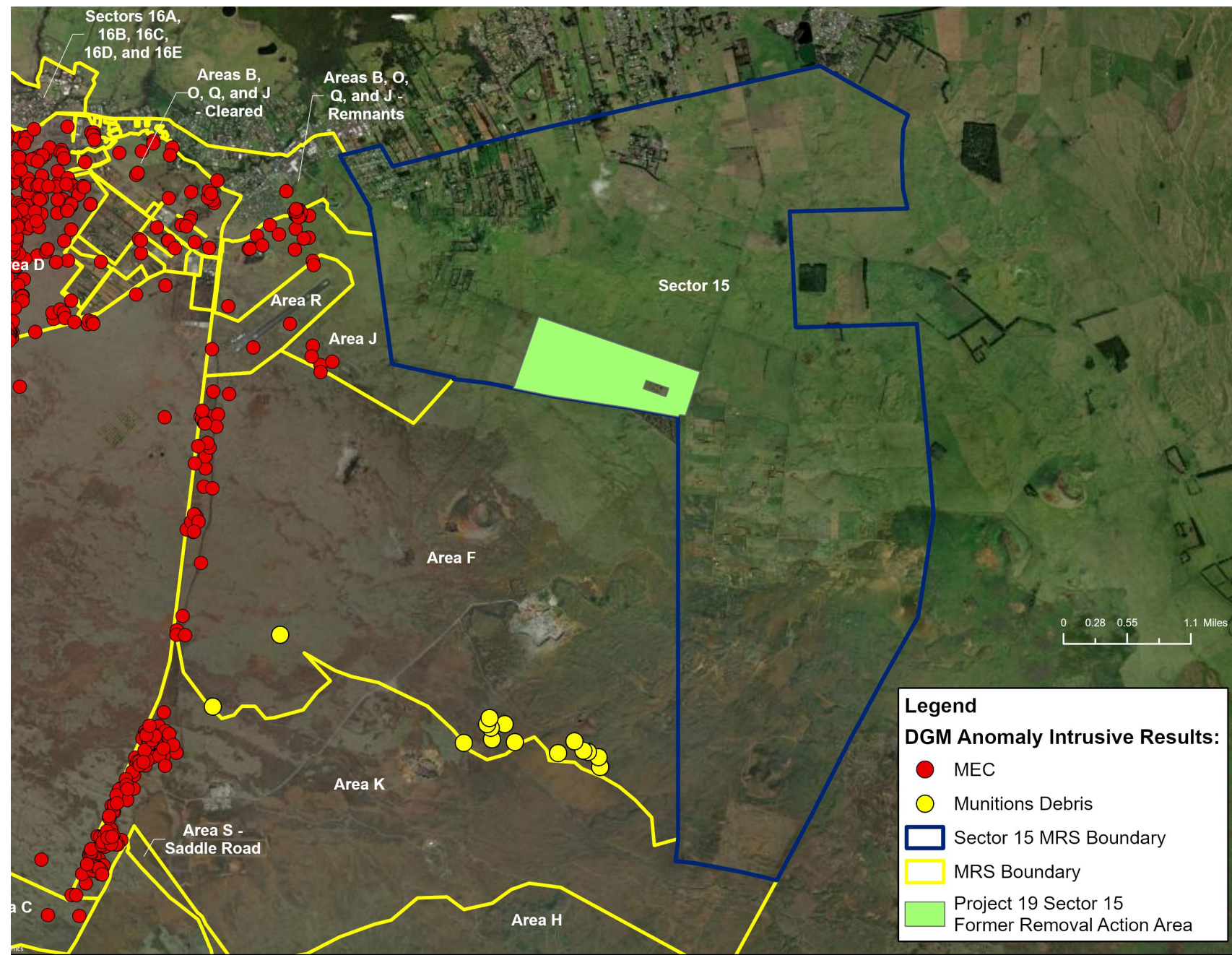
2006 Phase III Engineering Evaluation and Cost Analysis

- Conducted to characterize the risks from munitions related items.
- Figure on the left shows the coverage of the instrument aided (metal detector) visual survey.
- Figure on the right shows the digital geophysical survey (metal detector) completed.
- No munitions or munitions debris was identified.



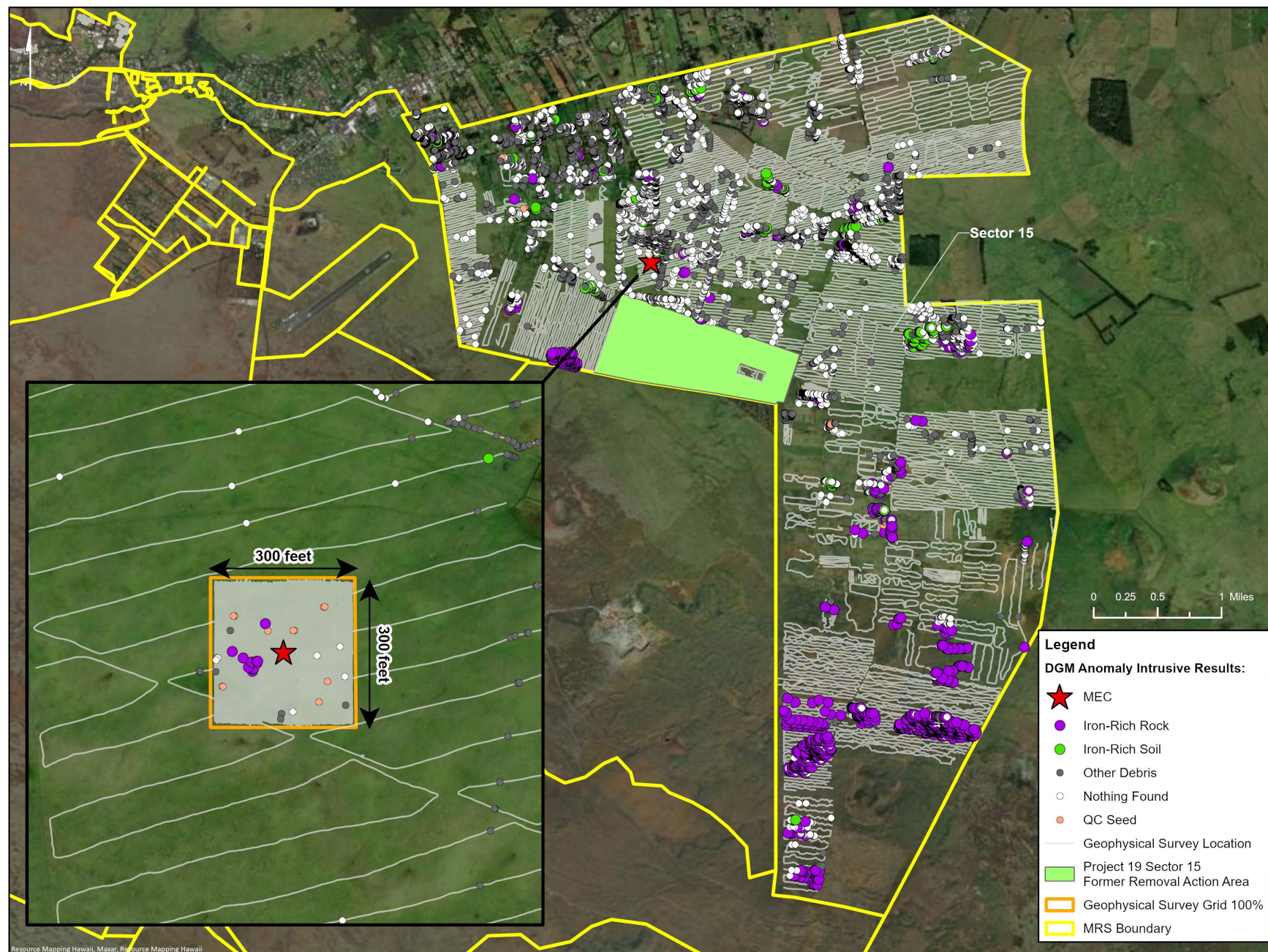
2009 and 2010 Non Time Critical Removal Action

- In 2009, Non Time Critical Removal Actions were conducted over several hundred acres covering the majority of the area adjacent to Sector 15.
- The nearest munitions items were discovered approximately 0.5 miles west of Waimea Airport and farther west in historic Camp Tarawa footprint (adjacent to Waimea Town).
- Munitions and munitions debris were not found in the adjacent areas during removals. The absence of military use evidence indicates that target areas did not extend into Sector 15.
- In 2010 a NTCRA was conducted on 491.9 acres within Sector 15. A total of 4,746 anomalies such as horseshoes, nails, and iron rich soil were investigated, and no MEC or MD items were found.



2016-2018 Remedial Investigation (RI) Field Investigation

- A total of 12,143 subsurface items were dug to visually confirm the presence or absence of munitions.
- All dug suspected anomalies were confirmed to be iron rich rock or soil, and non-munitions related debris like horseshoes, nails, and pieces of scrap metal.
- The exception was an anomalous munition find that appears to have been accidentally or intentionally buried as it was in an area without the surrounding metallic fragments which would indicate it was intentionally fired.





U.S. ARMY

ANOMALOUS MUNITION FIND

17



- The area surrounding where the item was found was 100% searched. No munitions debris or any munitions were found within the 300-foot by 300-foot area.
- This one munition item (partial rocket warhead), appears to have been accidentally or intentionally buried because there were no metallic fragments, such as motor, fins, or additional parts, found near it which would indicate it was intentionally fired.
- Furthermore, there was no indication/evidence that the rocket was used in the area or transported there by the military.
- It is more likely that the item was accidentally or intentionally relocated.





U.S. ARMY

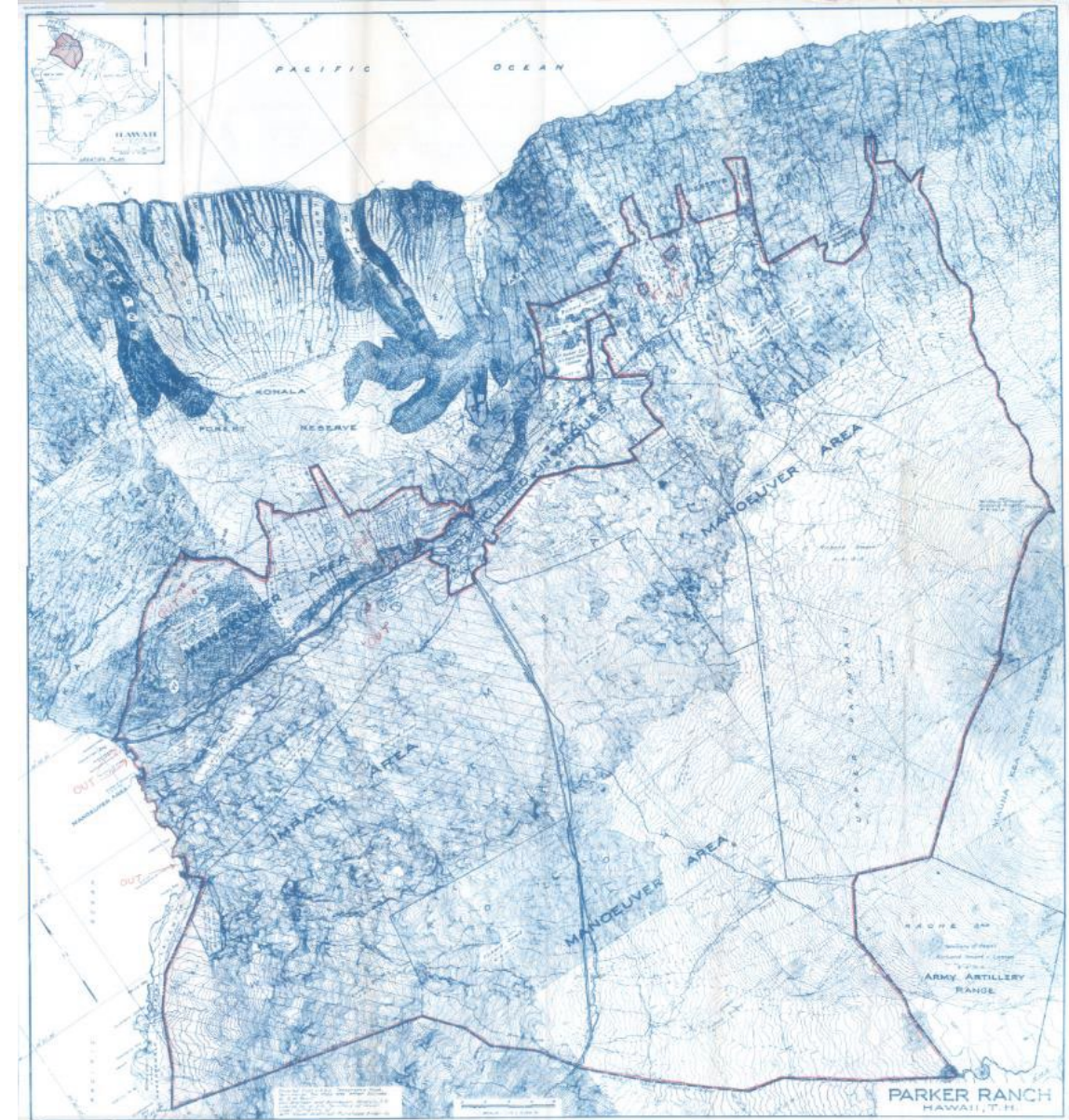
PREVIOUS INVESTIGATIONS

18



2021 Historical Photographic Analysis

- Analyzed aerial photography to identify evidence of previous military and other historically significant activities across the WMA.
- For Sector 15 the reports states “Tracks and trails are observed within the southern part of the sector. The upper sector appears to be used primarily for agriculture and grazing lands and is or was subdivided into separate areas by fencing or walls.”
- None of the historical photographs showed any evidence of munitions use in Sector 15.
- Confirms that the area where the munitions item was found was being used for farming and, therefore, it is highly unlikely that it was used for live fire exercises or disposal operations.





U.S. ARMY

PREVIOUS INVESTIGATIONS

2022 Final Preliminary Assessment for the Waikoloa Maneuver Area

- The Preliminary Assessment is an archival document search and analysis by a historian.
- Confirmed Sector 15 is within the “Non-Firing Maneuver Area” or within the “not included in the Request” area.
- No records were found to indicate that any munitions-related activities were conducted within the site.
- Referenced documents that stated firing was not allowed on grazing land; weapons training was prohibited near permanent structures such as water tanks, pipelines and troughs; and cattle was not to be disturbed.

REMEDIAL INVESTIGATION RESULTS



U.S. ARMY



US Army Corps
of Engineers®



U.S. ARMY

2023 REMEDIAL INVESTIGATION FINDINGS AND CONCLUSIONS



- An analysis was conducted to further analyze the 2016-2018 Remedial Investigation field data and to confirm that the conclusions for the munitions' characterization were accurate, complete, and of sufficient quality and quantity to characterize the site.
- Findings from the review were used to support the conclusion that the site is not contaminated with munitions.
- The evidence support the munitions characterization that that military munitions operations were not conducted in the area and no munitions hazard exists.
- Sector 15 is confirmed to be an “*No evidence of use (NEU)*” area.



NEU: No-evidence-of-use area: An area within a MRS where the weight of evidence indicates that no munitions were used or disposed of. All available and relevant lines of evidence supporting this delineation (e.g., historical records review, historical photo interpretation, visual observations, interviews, and field investigations) must be documented in the conceptual site model and considered.

SUMMARY OF SITE RISKS



US Army Corps
of Engineers®



U.S. ARMY

SUMMARY OF SITE RISKS

23



➤ Munitions and Explosives of Concern Risk Assessment

The Remedial Investigation concluded the area was not used for training with munitions with no munitions source area identified or suspected. Because no source of munitions was found within Sector 15, a risk evaluation was not required.

➤ Munitions Constituents Human Health and Ecological Risk Assessment

The Remedial Investigation concluded the area was not used for training with munitions with no source area identified or suspected. Because no source of munitions constituents was found within Sector 15, a risk evaluation was not required.





U.S. ARMY

PROPOSED PLAN FOR SECTOR 15

24



- USACE proposes that **No Further Action** is required for Sector 15
- No Further Action is necessary to protect human health and the environment as no evidence of use by military of munitions and munitions constituents were documented within Sector 15.



NEXT STEPS



US Army Corps
of Engineers®



U.S. ARMY



NEXT STEPS

- Take public comments under consideration and prepare responses to comments.
 - **Public comment Period: July 24 to August 25, 2023.**
- Consider all comments and prepare a Record of Decision, including a responsiveness summary.
- Final Record of Decision will be placed at the District Office and information repository:

USACE–Honolulu District
Building 230
Fort Shafter, Hawaii 96858-5440
Telephone: 808-835-4089

Information Repository
Thelma Parker Memorial Library
67-1209 Mamalahoa Highway
Kamuela, Hawaii 96743-8429
Telephone: 808-887-6067

- Additional information is available online at:
<https://www.poh.usace.army.mil/Missions/Environmental/FUDS/Waikoloa.aspx>

PUBLIC COMMENT OPPORTUNITY



US Army Corps
of Engineers®

U.S. ARMY



U.S. ARMY



PUBLIC COMMENT OPPORTUNITY

JULY 24 TO AUGUST 25, 2023

- Orally or in writing at tonight's meeting.
- Fill out a form and email or mail it by August 25, 2023.
- Documents available at:

<https://www.poh.usace.army.mil/Missions/Environmental/FUDS/Waikoloa.aspx>

Email: WMAUXOInfo@usace.army.mil

Mail: U.S. Army Corps of Engineers,
Honolulu District
ATTN: CEPOH-PPE
230 Otake St.
Fort Shafter, Hawaii 96858-5440



[This Photo](#) by Unknown Author is licensed under [CC BY-SA-NC](#)



U.S. ARMY

COMMENTS AND QUESTIONS

29



- To assist us with recording your comment, please state your first and last name.
- Remarks should not exceed three (3) minutes to maximize participation.

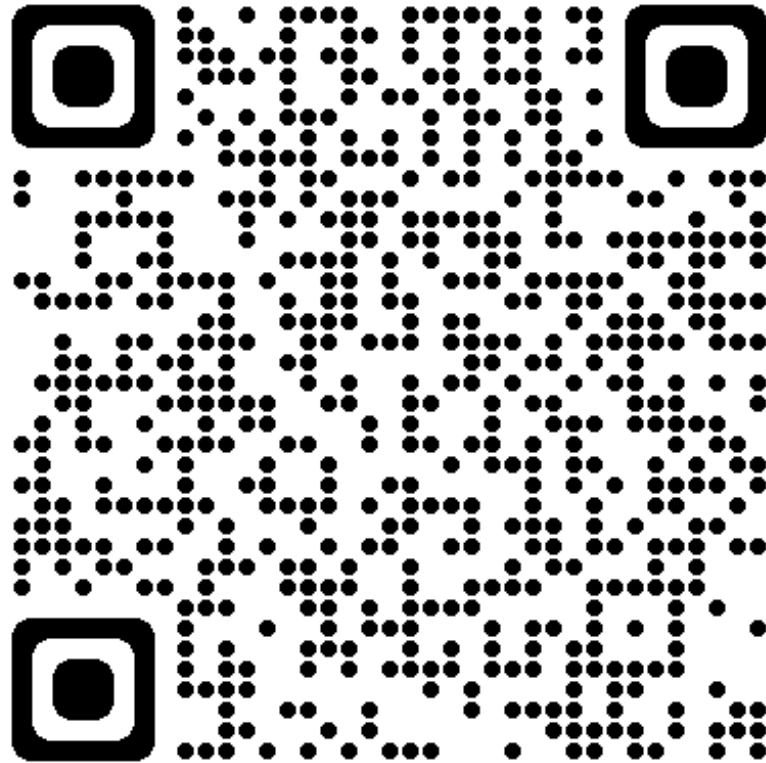




U.S. ARMY

JOIN OUR MAILING LIST

30





U.S. ARMY



FURTHER INFORMATION

Formerly Used Defense Sites (FUDS) Websites

- USACE Headquarters FUDS

<https://www.usace.army.mil/missions/environmental/formerly-used-defense-sites/>

- USACE-POH FUDS

<https://www.poh.usace.army.mil/Missions/Environmental/FUDS/>

- 3Rs of Explosive Safety Program

<https://www.usace.army.mil/Missions/Environmental/Formerly-Used-Defense-Sites/3Rs-of-Explosives-Safety-Information/>

<https://3Rs.mil>



U.S. ARMY

32



FOLLOW THE 3RS



Recognize

Retreat

Report

Recognize — when you may have encountered a munition and that munitions are dangerous.

Retreat — do not approach, touch, move or disturb it, but carefully leave the area.

Report — call 911 and advise the police of what you saw and where

Visit the 3Rs Explosives Safety Education website: 3Rs.mil