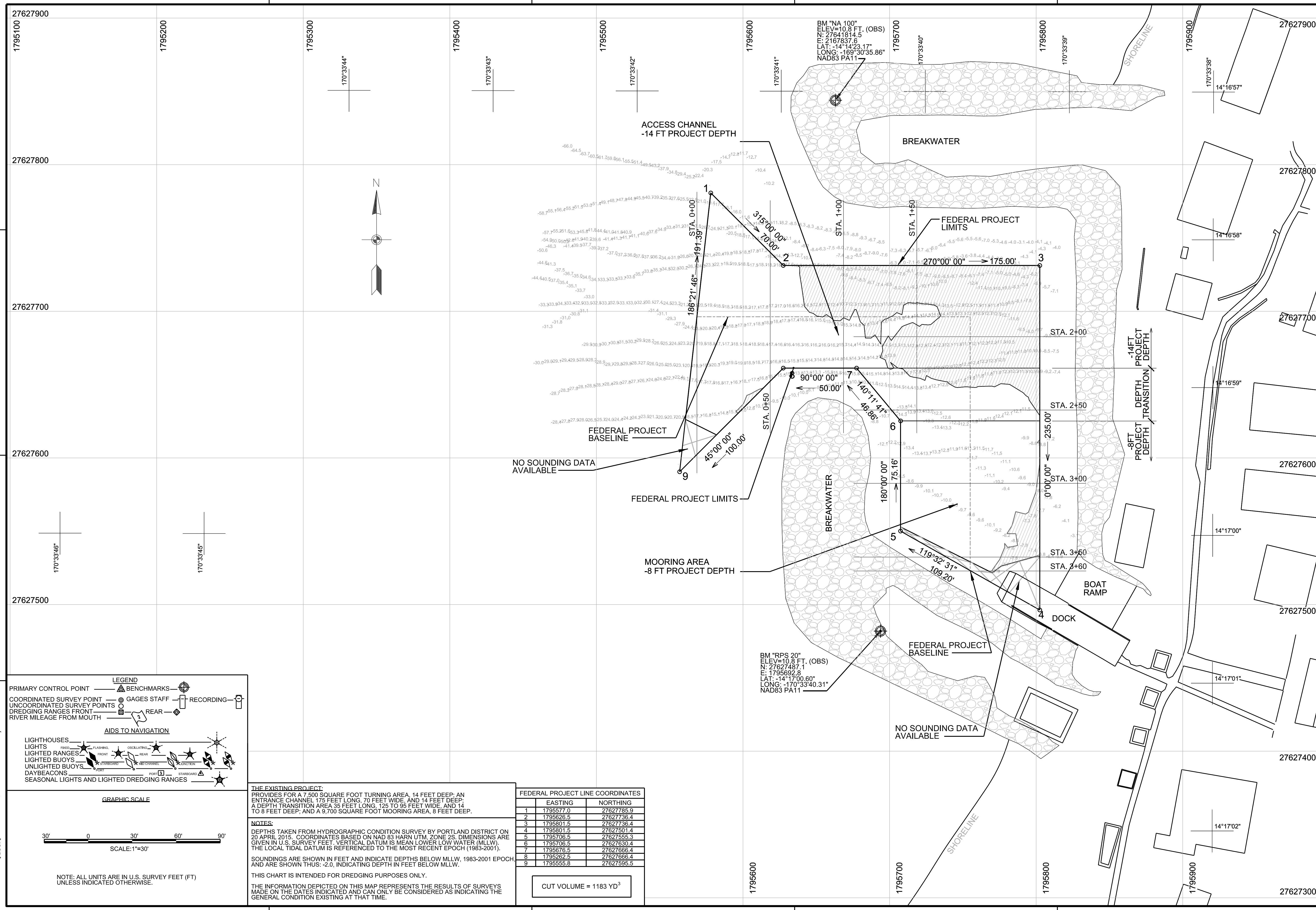


FILE: H:\mof\FY15-Hydro\Aunuu\_SBH15AU01\_VH101.dgn  
 PLOTDRIVER: C:\ProgramData\Bentley\PowerInRoads V8i (SELECTseries 4)\WorkSpace\System\pltrc\pdf.plt  
 MODEL NAME: ANSID  
 DATE & TIME: 04/20/2015 4:41:07 PM  
 LAST SAVED BY: \$user\$



**LEGEND**

PRIMARY CONTROL POINT — BENCHMARKS —  
 COORDINATED SURVEY POINT — GAGES STAFF — RECORDING —  
 UNCOORDINATED SURVEY POINTS —  
 DREDGING RANGES FRONT — REAR —  
 RIVER MILEAGE FROM MOUTH —

**AIDS TO NAVIGATION**

LIGHTHOUSES —  
 LIGHTS —  
 LIGHTED RANGES —  
 LIGHTED BUOYS —  
 UNLIGHTED BUOYS —  
 DAYBEACONS —  
 SEASONAL LIGHTS AND LIGHTED DREDGING RANGES —

**GRAPHIC SCALE**

30' 0 30' 60' 90'  
 SCALE: 1"=30'

**THE EXISTING PROJECT:**  
 PROVIDES FOR A 7,500 SQUARE FOOT TURNING AREA, 14 FEET DEEP; AN ENTRANCE CHANNEL, 175 FEET LONG, 70 FEET WIDE, AND 14 FEET DEEP; A DEPTH TRANSITION AREA 35 FEET LONG, 125 TO 95 FEET WIDE, AND 14 TO 8 FEET DEEP; AND A 9,700 SQUARE FOOT MOORING AREA, 8 FEET DEEP.

**NOTES:**  
 DEPTHS TAKEN FROM HYDROGRAPHIC CONDITION SURVEY BY PORTLAND DISTRICT ON 20 APRIL 2015. COORDINATES BASED ON NAD 83 HARN UTM, ZONE 2S. DIMENSIONS ARE GIVEN IN U.S. SURVEY FEET. VERTICAL DATUM IS MEAN LOWER LOW WATER (MLLW). THE LOCAL TIDAL DATUM IS REFERENCED TO THE MOST RECENT EPOCH (1983-2001).  
 SOUNDINGS ARE SHOWN IN FEET AND INDICATE DEPTHS BELOW MLLW, 1983-2001 EPOCH, AND ARE SHOWN THUS: -2.0, INDICATING DEPTH IN FEET BELOW MLLW.  
 THIS CHART IS INTENDED FOR DREDGING PURPOSES ONLY.  
 THE INFORMATION DEPICTED ON THIS MAP REPRESENTS THE RESULTS OF SURVEYS MADE ON THE DATES INDICATED AND CAN ONLY BE CONSIDERED AS INDICATING THE GENERAL CONDITION EXISTING AT THAT TIME.

**FEDERAL PROJECT LINE COORDINATES**

	EASTING	NORTHING
1	1795577.0	27627785.9
2	1795626.5	27627738.4
3	1795601.5	27627738.4
4	1795801.5	27627501.4
5	1795706.5	27627655.3
6	1795706.5	27627630.4
7	1795676.5	27627666.4
8	1795262.5	27627666.4
9	1795555.8	27627595.5

CUT VOLUME = 1183 YD<sup>3</sup>

**US Army Corps of Engineers**  
 HONOLULU DISTRICT

DATE	DESCRIPTION	APPR.	MARK

ISSUE DATE: xxxxxxxx  
 CONTRACT NO.: xxxxxxxx  
 PRECONSTRUCTION LOCATION NO.: xxxxxxxx  
 FILE NUMBER: xxxxxxxx

DESIGNED BY: xxxxxxxx  
 CHECK BY: xxxxxxxx  
 DRAWN BY: MRS  
 SUBMITTED BY: xxxxxxxx  
 PLOT SCALE: xxx/2015  
 FILE NAME: xxx\_VH101.DGN  
 SIZE: 1" = 30'

US ARMY CORPS OF ENGINEERS  
 HONOLULU DISTRICT  
 HONOLULU, HI  
 CIVIL WORKS TECHNICAL BRANCH

FY15 HYDROSURVEYS  
 AUNUU HARBOR  
 HYDROGRAPHIC SURVEY  
 AUNUU, AMERICAN SAMOA

SITE PLAN, SURVEY  
 NOTES & SOUNDINGS  
 20 APRIL 2015

**SHEET IDENTIFICATION**  
 VH101  
 SHEET 1 OF 2